

KEY *luxe*

Decorative Epoxy & Blended Aggregate Flooring for:

- ✓ Commercial
- ✓ Business
- ✓ Education
- ✓ Medical
- ✓ Residential
- ✓ Retail

keyresincompany.com 

(888) 943-4532 

The latest innovation in resinous flooring from Key Resin Company. Keyluxe is a decorative slurry of epoxy mixed with one complete blend of our very own color and aggregate. This new product saves time and steps during mixing and installation as it does not require broadcasting aggregates or grouting. The final outcome is a beautiful smooth finished texture, ideal for making a big impact in small to mid-size spaces.

APPLICATION OVERVIEW



Epoxy



Keyluxe Filler



Mix



Apply



Cure



Topcoat

APPLICATION SUGGESTIONS



Business



Commercial



Education



Medical



Residential



Retail

Important Color Note: While we make every effort to ensure the most accurate representation of colors in print, there is not a 100% accurate way to reproduce the breadth of color and effect our products provide. Our color guided literature is intended for preliminary color selection purposes only. Always refer to a physical sample to make a final color selection and remember that substrate, primer/base coat and topcoats will all vary the final color outcome. Contact your local Key Resin Representative for assistance or our main office at (888) 943-4532.



CORE COLORS

KEYluxe

COLOR ▼

COLOR + BRILLIANCE ▼

COLOR + PLUS ▼



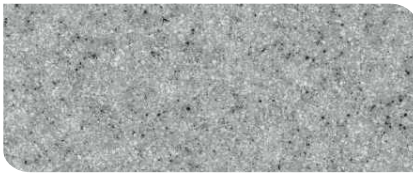
PURE
KR 130-1



PURE BRILLIANCE
KR 130-2



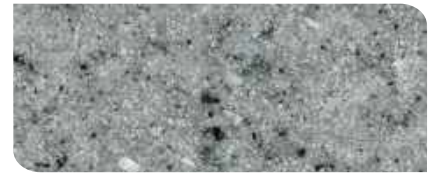
PURE PLUS
KR 130-3 



TRADITIONAL
KR 102-1



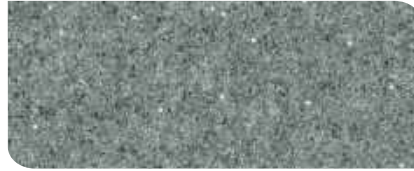
TRADITIONAL BRILLIANCE
KR 102-2 



TRADITIONAL PLUS
KR 102-3



CLASSIC
KR 114-1 



CLASSIC BRILLIANCE
KR 114-2



CLASSIC PLUS
KR 114-3



AUTHENTIC
KR 116-1




AUTHENTIC BRILLIANCE
KR 116-2



AUTHENTIC PLUS
KR 116-3

! Be sure to read the 'Important Color Note' on the inside front cover.

 This symbol denotes sample colors that are readily available for shipping requests.



KEYluxe

CORE COLORS

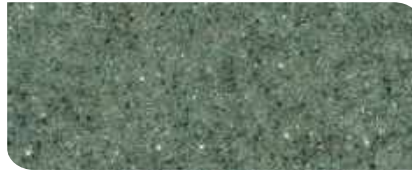
COLOR ▼

COLOR + BRILLIANCE ▼

COLOR + PLUS ▼



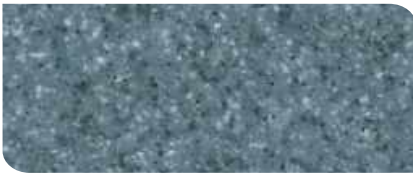
FRESH
KR 135-1



FRESH BRILLIANCE
KR 135-2



FRESH PLUS
KR 135-3 



COZY
KR 129-1



COZY BRILLIANCE
KR 129-2 



COZY PLUS
KR 129-3



COOL
KR 120-1 



COOL BRILLIANCE
KR 120-2



COOL PLUS
KR 120-3




WARM
KR 109-1



WARM BRILLIANCE
KR 109-2



WARM PLUS
KR 109-3

! Be sure to read the 'Important Color Note' on the inside front cover.
 This symbol denotes sample colors that are readily available for shipping requests.



CORE COLORS

KEYluxe

COLOR ▼

COLOR + BRILLIANCE ▼

COLOR + PLUS ▼



SIMPLICITY
KR 126-1



SIMPLICITY BRILLIANCE
KR 126-2



SIMPLICITY PLUS
KR 126-3 



SUBTLE
KR 134-1



SUBTLE BRILLIANCE
KR 134-2 



SUBTLE PLUS
KR 134-3



NATURAL
KR 111-1 



NATURAL BRILLIANCE
KR 111-2



NATURAL PLUS
KR 111-3




EARTHY
KR 112-1



EARTHY BRILLIANCE
KR 112-2



EARTHY PLUS
KR 112-3

! Be sure to read the 'Important Color Note' on the inside front cover.
 This symbol denotes sample colors that are readily available for shipping requests.



KEYluxe

TEXTURE SERIES



HUMBLE
KR 403



DIVERSE
KR 404 



MUTED
KR 405



MELLOW
DF 147



SUBLIME
KR 401



INVIGORATING
DF 148



ENVY
DF 146



CHARMING
DF 151



SURREAL
DF 150




ENERGETIC
KR 406



WHIMSY
DF 152



SPICY
KR 402

! Be sure to read the 'Important Color Note' on the inside front cover.
 This symbol denotes sample colors that are readily available for shipping requests.

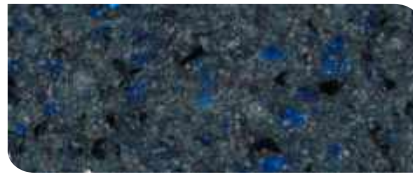


DESIGNER SERIES

KEYluxe



DRAMATIC KR 301



COSMIC KR 302

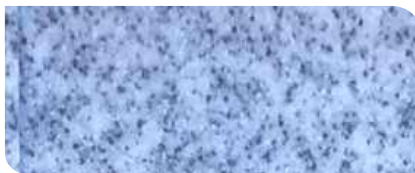


MYSTICAL KR 303 



VIBRANT KR 304

POLISHED SERIES



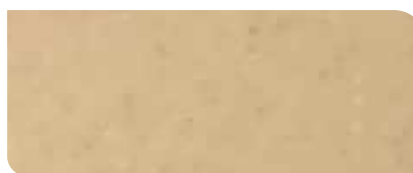
IGNEOUS KR 201



LIMESTONE KR 202 




SANDSTONE KR 203



DOLOMITE KR 204



! Be sure to read the 'Important Color Note' on the inside front cover.

 This symbol denotes sample colors that are readily available for shipping requests.





ABOUT KEY RESIN COMPANY

We provide industry experience and undeniable quality to meet the demands of your flooring and coating needs.

LOCATIONS

Key Resin Company is headquartered in Batavia, Ohio with offices in Phoenix, Arizona. In order to better serve you, we have a variety of convenient warehouse locations across North America and regularly ship internationally.

PRODUCTS

Key Resin Company manufactures Key Resin branded product and our premium product KRC Terrazzo, and as of 2018, we also manufacture all Flowcrete products in North and South America. Our knowledge and in-depth understanding of the construction market, architectural atmosphere and resinous flooring industry, combined with our vast product knowledge and technical expertise, allows us to provide better flooring products than ever before.

BENEFITS

Our products provide durable, dependable solutions for a variety of applications, including: Decorative, Elastomeric, Industrial, Methyl Methacrylate (MMA), Moisture Vapor Control, Chemical Resistance, Impact & Wear Resistance, Thermal Shock Resistance, ESD/Conductivity, Slip Resistance, Color & Appearance for Floor and Wall Coatings.

Our solutions deliver a cost-effective lifecycle profile and outstanding overall performance. We manufacture products with you in mind, they look great and perform even better!



v1.2 1/22

KEY RESIN COMPANY
4050 Clough Woods Drive
Batavia, OH 45103
(888) 943-4532

WAREHOUSE
Locations across the U.S.

WESTERN US
4330 N. 43rd Avenue, Suite B-4
Phoenix, AZ 85031
(602) 523-9353