

URETHANE CEMENT

KEY RESIN COMPANY



Manufacturing



Food Processing



Healthcare

Key Resin Urethane Cement is a heavy-duty, urethane modified cementitious topping with high impact resistance, thermal shock resistance, quick installation and fast cure times. Urethane Cement is ideal for manufacturing and food and beverage facilities.

ADVANTAGES

- Excellent chemical resistance
- Shock resistant
- Durable against wear & impact
- Great against moisture vapor transmission
- Low-odor application in occupied facilities
- Fast installation & cure time

TYPICAL USES

- Kitchens & cafeterias
- Restrooms & locker rooms
- Manufacturing & food processing
- Bottling & packaging
- Walk-in coolers & freezers
- Healthcare & laboratories

Key Resin Company provides this color guide for preliminary color selection only. Please refer to a physical sample prior to making a final selection. Contact your local Key Resin Representative for assistance or contact the main office.



URETHANE CEMENT

STANDARD COLORS



CREAM



TAN



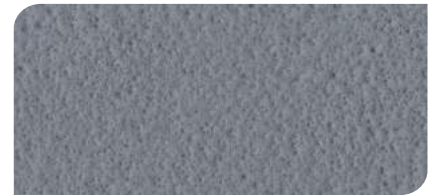
KHAKI



RED



BLACK



COMMON GREY



DARK GREY



GREEN*



BLUE*

See Flake literature for additional blends.



FLAKES

Polar

See Quartz literature for additional blends.



SAFETY YELLOW*



QUARTZ

Camel

* Premium color, available upon request and additional surcharges apply.



CUSTOM COLORS?
just ask!

